

BOLA Focus – Novelties at a glance

Continuous improvement has been one of Bohlender's basic principals since its founding. That is why we permanently develop new products and bring our existing products to perfection. Each product is tested repeatedly,

reworked continuously and ideally adapted to your daily requirements. On these pages we show you a choice of our novelties and product developments.

BOLA Scrubber Bottles Vitrum

Material:	Material:	Temperature resistance	Chemical resistance:	Vacuum:	autoclave:
PTFE	Borosilicate glass 3.3	from -200°C to +250°C	+++ universal	suitable	121°

Product description:

NEW

FDA conform

Consisting of a PTFE body with screw cap and two lateral GL 18 threaded necks, suitable bottle made of borosilicate glass as well as a FEP inlet tube and a gas distributor with finest bores. Easy in- and outlet of gas by means of hard-walled tubing (e. g. PTFE) which can be connected to the threaded necks with BOLA Laboratory Screw Joints. Elastic tubing can be connected by means of hose connectors.

The special feature: The body of the distributor can be turned independently from the screw cap. This means, that the completely assembled distributor can be removed and fixed on another bottle without the risk of disarranging the tubing.

	Capacity mL	For bottle thread	Necks GL	Total height mm	Cat.No.:
A	500	GL 45	2 x 18	207	N 1662-14
	1.000	GL 45	2 x 18	256	N 1662-24
B	500	GLS 80	2 x 18	186	N 1662-34
	1.000	GLS 80	2 x 18	256	N 1662-44



BOLA Focus – Novelties at a glance

BOLA Distributors for Canisters

Material:	Temperature resistance	Chemical resistance:	autoclave:	autoclave:
PP	from -20°C to +110°C	++ very good	121°	121°

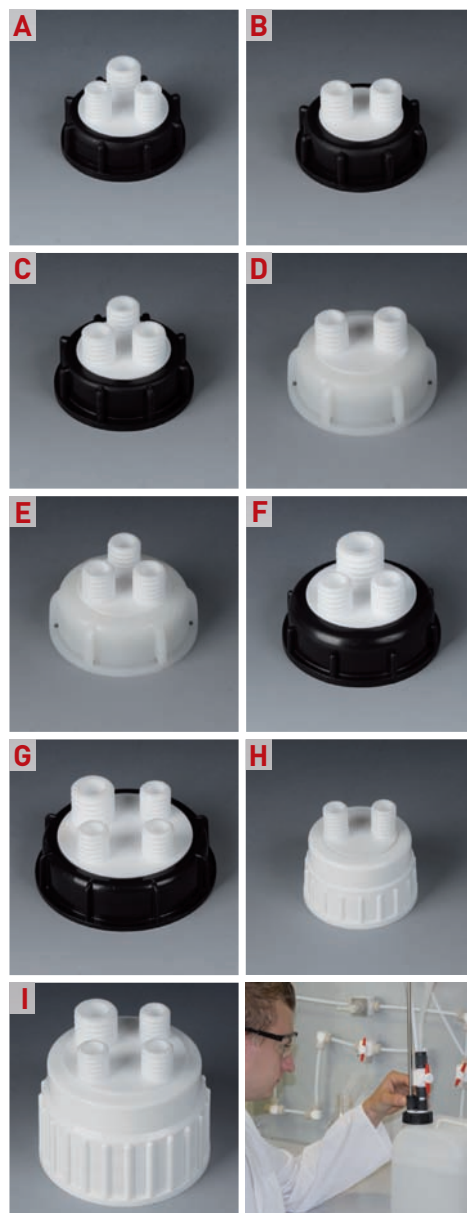
Produktbeschreibung:

Screw cap made of PE for different canister threads, movable PTFE body with GL-threaded necks. Very good chemical resistance, for working temperatures up to max. 110 °C. The product is only exposed to PTFE.

NEW

FDA conform

	Canister thread	Necks GL	Cat. No.:
A	S 55	2 x 14 / 1 x 18	D 762-08
B	S 60	2 x 18	D 762-14
C	S 60	3 x 18	D 762-20
D	S 65	2 x 18	D 762-26
E	S 65	3 x 18	D 762-32
F	S 71	2 x 18 / 1 x 25	D 762-38
G	S 90	3 x 18 / 1 x 25	D 762-44
H	Nalge B53	2 x 14	D 766-16
I	Nalge B83	3 x 18 / 1 x 25	D 766-22



Made to measure.



You are in need of getting lab equipment for your special application? Something special which is not part of our standard product range? As manufacturer we are able to offer custom made items.

This is easier and faster than you may expect. Discuss your idea with our professionals. They will give advice and support during design. Finally, your idea will become real: We produce

to your requirements and in compliance with the chosen raw materials - starting with 1 piece. We only need a drawing (a sketch is sufficient) and some further information.

You have a special request?
Give us a call: **+49 (0) 93 46-92 86-0**

BOLA Focus – Novelties at a glance

BOLA Fluoroplastic Grease Tubes

Material: PTFE Temperature resistance: from -20 °C to +260 °C Chemical resistance: +++ universal

Product description:

High-performance grease for all kinds of greasing points, fine PTFE particles lower the friction between the surfaces, a special additive system provides extremely high pressure and temperature resistance, also suitable as anticorrosive, does not contain any heavy metals.

NEW

Capacity g	Cat. No.:
100	S 1872-16

Product advantages:

- » very low friction coefficient
- » extremely high pressure and temperature resistance



BOLA Thermoelement K

Material: PTFE Temperaturbeständigkeit: -200 °C bis +250 °C Chem. Beständigkeit: +++ universell Meßbereich: -50 °C bis +250 °C

Produktbeschreibung:

Thermocouple K (Ni Cr + Ni Al) in einem mit PTFE ummantelten Edelstahlrohr (1.4571). Fühler Ø 8 mm, mit angespitztem Fühlerende, Fallschutzring Ø 12 mm. Der Anschluss erfolgt durch ein grünes PTFE-überzogenes Anschlusskabel (1,5 m).

NEW

Typische Ansprechzeiten:

- » T 50: ca. 25 s
- » T 90: ca. 59 s

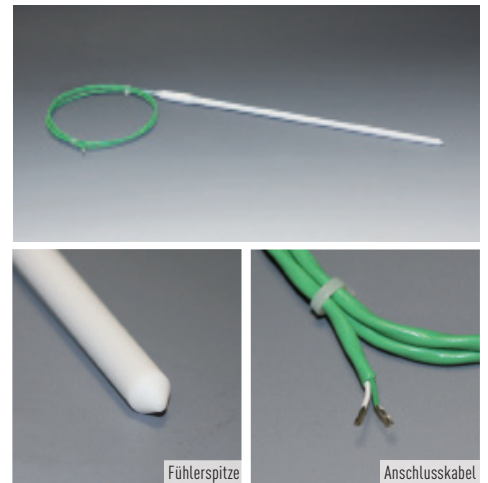
FDA konform

Erläuterung hierzu auf Seite 226

Fühlernutzlänge mm	Gesamtlänge mm ca.	Artikel-Nr.:
200	260	P 1850-15
300	360	P 1850-20
500	560	P 1850-25

Anwendungen:

- » zur Temperaturmessung in aggressiven Medien
- » Anschlusskabel bietet Flexibilität vom Messinstrument zum Medium



Fühlerspitze

Anschlusskabel

BOLA Temperature Probes K

Material: PTFE	Temperature resistance: from -200°C to +250°C	Chemical resistance: +++ universal	Temperature range: from -50°C to +250°C
--------------------------	---	--	---

Product description:

Thermocouple K (Ni Cr + Ni Al) in a PTFE-encapsulated stainless steel tube (1.4571). Temperature probe Ø 8 mm, pointed tip, collar ring Ø 12 mm. With green PTFE-coated cable (length: 1,5m) and SMP-connector.

NEW

Typical response times:

- » T 50: 25 s
- » T 90: 59 s

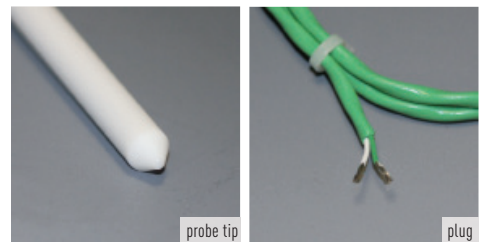
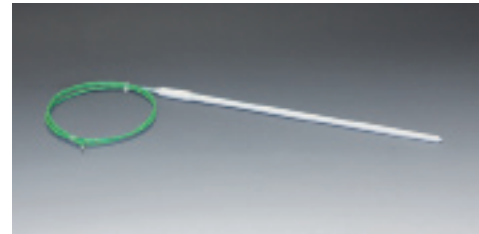
FDA conform

See page 224 for detailed explanation.

Usable length mm	Total length mm	Cat. No.:
200	260	P 1860-15
300	360	P 1860-20
500	560	P 1860-25

Applications:

- » temperature measurement in aggressive liquids
- » cable provides flexible connection from measuring device to medium



BOLA Fluoroplastic Sealing Paste

Material: PTFE	Temperature resistance: from -240 °C to +260 °C	Chemical resistance: +++ universal
--------------------------	---	--

Product description:

Odourless and nontoxic paste for all kinds of sealings, non-hardening, eliminates leaks on threads even if high pressure resistance is needed, threaded connections can easily be closed and opened, the threads are prevented from being damaged.

NEW

Capacity g	Cat. No.:
500	S 1874-16

Product advantages:

- » does not trickle or flow during use
- » resealable can including brush

Applications:

suitable for many bases and acids, any kinds of solvents or gases including hydrogen, ammoniac, chlorine, propane, butane, nitrogen, as well as for air, steam, refrigerants, salt water, and fuels (do not use on liquid or gaseous oxygen and lactic acid).



BOLA Focus – Novelties at a glance

BOLA GL-Aeration

Material: PTFE	Material: PPS	Temperature resistance: from -40 °C to +70 °C	Chemical resistance: ++ very good	autoclave: 121°
--------------------------	-------------------------	---	---	---------------------------

Product description:

Filter with PTFE membrane (pore size 0,2µm) and flexible tubing, screw cap made of PPS for GL threads.

NEW

FDA conform

For thread GL	Filter material	Pore size µm	Filter O.D. mm	Cat. No.:
14	PTFE	0,20	33	N 1697-14
18	PTFE	0,20	33	N 1697-18

Applications:

For sterile pressure compensation on multiple distributors for bottles. Overpressure or vacuum in the vessel are prevented. A contamination of the product with dust or any other particles is avoided. It is recommended to exchange the filter every 6 months.



BOLA Beakerliner

Material: PTFE	Temperature resistance: from -200 °C to +250 °C	Chemical resistance: +++ universal	Vacuum: suitable	autoclave: 121°
--------------------------	---	--	----------------------------	---------------------------

Product description:

PTFE-encapsulated magnetic core (Alnico 5) axially mounted in a guide cage made of PTFE, universal chemical resistance.

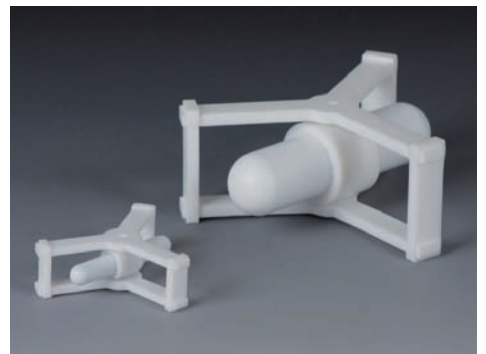
NEW

FDA conform

For Beakers low form ml	Cage O.D. mm	Cage height mm	Stirring bar length mm	Cat. No.
250, 400	67	21	50 x 8	C 362-08
600, 800, 1.000	74	29	60 x 10	C 362-12
2.000	103	32	80 x 10	C 362-16
3.000, 5.000	125	48	115 x 25	C 362-20

Applications:

No shear action on the bottom of the beaker, smooth running in glass beakers also on an uneven bottom. The cage acts like a baffle and thus provides optimum mixing results.



BOLA Distributors for Canisters

These distributors are ideal for drawing liquids from canisters and for distributing these liquids to several vessels.

They consist of a screw cap for canister threads S or Nalge B (see page 236 in our catalogue for detailed dimensions) and a movable body with GL-threaded necks. The threaded necks allow the connection of tubing or tubes made of glass, metal, or plastic by means of BOLA Laboratory Screw Joints (see page 55 in our catalogue). The distributor can also be integrated into a pressure or vacuum system.

A possible unevenness of the canister thread is adjusted by an o-ring behind an elastic sealing lip, and the canister is closed tightly. The product is only exposed to the body of the distributor.

The special clou: the body of the distributor can be turned independently from the screw cap. This means, that the completely assembled distributor can be removed and fixed on another canister without the risk of disarranging the tubing.

BOLA Distributors for Canisters

Material:	Temperature resistance	Chemical resistance:	autoclave:
PTFE	from -200°C to +250°C	+++ universal	121°

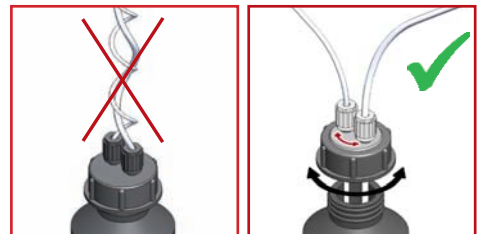
Product description:

Screw cap made of glass-fibre reinforced PTFE for canister thread S 55 or S 60, movable body with GL-threaded necks made of PTFE. Very good chemical resistance, for working temperatures up to max. +250°C. The product is only exposed to PTFE.

NEW

FDA conform

Canister thread	Necks	Cat. No.:
S	GL	
55	2 x 14 / 1 x 18	D 760-16
60	3 x 18	D 760-24



BOLA Distributors for Canisters

Material:	Temperature resistance	Chemical resistance:	autoclave:
PP	from -20°C to +110°C	++ very good	121°

Product description:

Screw cap made of PP for canister thread S 55 or S 60, movable body with GL-threaded necks made of PP. Restricted chemical resistance, for working temperatures up to max. +110°C.

NEW

FDA conform

Canister thread	Necks	Cat. No.:
S	GL	
55	2 x 14 / 1 x 18	D 764-16
60	3 x 18	D 764-24



BOLA Focus – Novelties at a glance

BOLA Jumbo Magnetic Stirring Bar Retrievers

Material: **PTFE** Temperature resistance: **from -200 °C to +250 °C** Chemical resistance: **+++ universal**

Product description:

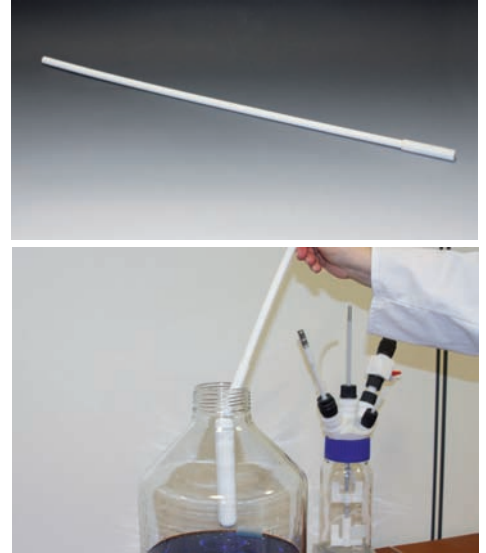
PTFE-encapsulated stirring bar retriever with extra strong permanent magnet (Neodym), universal chemical resistance.

NEW

Length mm	Lower end dia. mm	Bar dia. mm	Cat. No.
700	16	12	C 371-16

Applications:

For the removal of stirring bars from aggressive liquids. Especially for big and heaving stirring bars up to 400 g.



BOLA UNF-Adaptors for-Prominent® Pumps

Material: **PTFE** Temperature resistance: **from -200°C to +250°C** Chemical resistance: **+++ universal** Pressure: **10 bar**

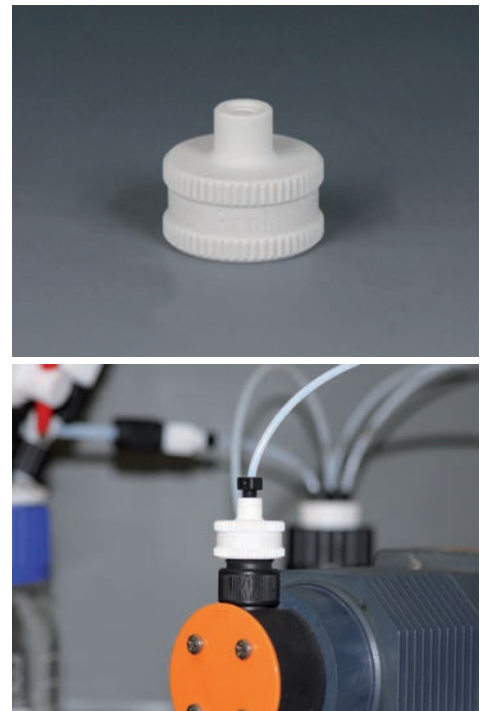
Product description:

Adaptor made of glass-fibre reinforced PTFE, transition from pump thread M20 x 1,5 to female thread UNF 1/4" 28 G. Pressure resistant connection (max. 10 bar). The tubing is connected by means of tube end fittings to a female thread UNF 1/4" 28G. Universal chemical resistance, the product is only exposed to PTFE.

NEW

FDA conform

For tubing I. D. x O. D. mm	Bore dia. mm	Cat.No.
(1/32" x 1/16") - 0,8 x 1,6	0,8	D 731-12
(1/16" x 1/8") - 1,6 x 3,2	1,6	D 731-24



BOLA GL Transition Fittings

Material: PTFE
 Temperature resistance: from -20°C to +120°C
 Chemical resistance: +++ universal

Product description:

Fitting made of PTFE. One side with thread GL 14 for connecting hard-walled tubing and tubes by means of BOLA Laboratory Screw Joints. Other side with female thread UNF 1/4" 28G for connecting flanged tubing with O. D. 1,6 and 3,2 mm by means of tube end fittings.

NEW

FDA conform

For tubing I.D. x O.D. mm	Bore dia. mm	Fitting Thread GL	Female Thread UNF	Total length mm	Cat.No.:
0,8 x 1,6	0,8	14	1/4" 28G	39	F 761-08
1,6 x 3,2	1,6	14	1/4" 28G	39	F 761-16



BOLA UNF Screw-in Tube Fittings

Material: PTFE
 Temperature resistance: from -20°C to +120°C
 Chemical resistance: +++ universal

Product description:

Straight tube fitting made of PTFE. One side with fitting thread GL 14 for connecting hard-walled tubes and tubing by means of BOLA Laboratory Screw Joints. Other side with male screw-in thread UNF 1/4" 28G for connection to units and fittings with female thread UNF 1/4" 28G.

NEW

FDA conform

For tubing I.D. x O.D. mm	Bore dia. mm	Fitting thread GL	Fitting thread UNF	Total length mm	Cat.-No.
0,8 x 1,6	0,8	14	1/4" 28G	39	F 763-08
1,6 x 3,2	1,6	14	1/4" 28G	39	F 763-16



BOLA Focus – Novelties at a glance

BOLA Measuring Cylinders

Material: PTFE/TFM Temperature resistance: from -200 °C to +250 °C Chemical resistance: +++ universal

NEW

FDA conform

Product description:
 Translucent and non-porous. Design based on ISO 4788. With graduation (uncalibrated), spout and reinforcing ring. Universal chemical resistance, the product is only exposed to PTFE.

Capacity ml	Graduation divisions ml	Total height mm	I. D. mm	Cat. No.
50	1	172	24	A 164-12
100	2	202	30	A 164-16
250	2,5	268	40	A 164-20
500	5	308	53	A 164-30

- Product advantages:**
- » hexagonal base prevents the cylinder from rolling
 - » permanent, recessed graduation

Application:
 Volume measurement of aggressive or pure liquids

